



# SPEED & TRACK

TRADING & CONTRACTING

SINCE 2015



## COMPANY PROFILE

**ADDRESS:** RETAJ BUILDING, 2ND  
FLOOR, OFFICENO. 253, ABU HAMOUR,  
DOHA, QATAR

**P.O BOX:** 40590

**PHONE:** +974 71733017, +974 6009 3866

**FAX:** 44371722

**EMAIL:** [INFO@SPEEDANDTRACK.COM.QA](mailto:INFO@SPEEDANDTRACK.COM.QA)

**WEBSITE:** [WWW.SPEEDANDTRACK.COM.QA](http://WWW.SPEEDANDTRACK.COM.QA)



## **FACTS AND FIGURES**



**COMPANY NAME:**

**SPEED & TRACK  
TRADING & CONTRACTING**

**ADDRESS:**

**RETAJ BUILDING, 2nd  
FLOOR, OFFICE NO. 253, ABU HAMOUR,  
DOHA, QATAR**

**P.O BOX:**

**40590**

**PHONE:**

**+974 71733017, +974 6009 3866**

**FAX:**

**44371722**

**EMAIL:**

**info@speedandtrack.com.qa**

**WEBSITE:**

**[www.speedandtrack.com.qa](http://www.speedandtrack.com.qa)**

**CR NR:**

**74690**

**MINISTRY OF BUSINESS & TRADE NR: 4752801**

**YEAR OF ESTABLISHMENT: 2015**

**CERTIFICATIONS: ISO 9001:2015, ISO 14001:2015, ISO 45001:2018**



## **HISTORY:**

Founded in 2015, SPEED & TRACK TRADING & CONTRACTING Company is a member of the one of the largest global suppliers of building materials, waterproofing, thermal insulation, and commercial technologies, car parking accessories, expansion joints system etc.,

## **VISION:**

Leader in Building Materials, Waterproofing, Thermal Insulation, and Commercial Technologies.

## **MISSION:**

SPEED & TRACK TRADING & CONTRACTING Company is committed to providing the most up-to-date high-quality, building materials, waterproofing, thermal insulation, and commercial technologies in the global market. It dedicates itself to providing significant investments in new product development, providing the highest levels of customer service, technical support, and assisting our valued customers in the growth of their businesses.

## **RELATIONSHIPS:**

We have the ability and capacity to serve architects, consultants, contractors and the DIY sector.

We have had long-standing relationships with architects, consultants and contractors.

## **CONSISTENCY:**

Simply put, you know what you're getting from our latest building materials, waterproofing, thermal insulation, and commercial technologies. We deliver high-quality products - consistently, year after year. Customers receive on-time deliveries, backed by a wide range of standards compliances and partnerships.

## **PRODUCT LINES:**

With the widest range of building materials, waterproofing, car parking accessories, expansion joints system, thermal insulation and commercial technologies, we pride ourselves in having the product lines that best meet our customers' needs.

## **PRODUCT DEVELOPMENT:**

We have 9 years of experience of building materials, waterproofing, thermal insulation, and commercial technologies, so our technical expertise, research and development capabilities definitely lead our industry and the global market.

## **SALES & TECHNICAL SUPPORT:**

We have training programs to help our company have a better understanding of our latest building materials, waterproofing, thermal insulation, and commercial technologies.

## **MARKETING SUPPORT:**

We offer our contractors unparalleled support including merchandising, data sheet, product submittals, catalog assistance, co-op advertising, trade show, direct mail support, and lead generation, to name just a few.



As we are engaging in a Multi-National Company & Projects in supplying its Miscellaneous Metal & other related Engineering services for their projects, we make sure that the key working staff who are working with us, have the capacity to deliver their vital participation in the execution of the proposed project. Keeping our harmonious working relationship & professional approach in dealing with the project technical group, we maintain our integrity as an incredible supplier of various materials in the field of construction world.

## **GENERAL MANAGER**

- Increases management's effectiveness by recruiting, selecting, training, coaching, counseling, & disciplining managers.
- Communicating values, strategies, & objectives; assigning accountabilities; planning, monitoring, & appraising job results.
- Develops incentives; developing a climate for exchanging information, ideas & opinions; nevertheless, providing educational opportunities.
- Develops a strategic plan by studying technological & financial opportunities; presenting assumptions; as well as setting objectives the staff.
- Accomplishes subsidiary objectives by establishing plans & budgets, monitoring results, allocating resources, reviewing progress & making mid-course corrections.
- Establishes policies & best practice for the Procurement, Production, Marketing & Technical services.

## **COMMERCIAL MANAGER**

- Assist in strategy planning, as well as monitor their implementation.
- Management of Sales team & working with Sales Manager & contract managers. Follow up with client's & their requirements.
- Oversee financial management of Projects, as well as new bids, contract negotiation, Contractual & commercial conflicts.
- Managing Daily operations, spread awareness & proper understanding of our Quality standards & obligation towards clients.



# **SATANDARD OPERATING PROCEDURES**

## **SHOP-DRAWING PREPARATION**

- Preparation of shop drawing is very important in order to meet the client's needs and satisfaction. Being committed to a high-quality standard of fabrication works and turning the idea into reality, we see to it that the following procedure has been consistently applied and implemented throughout the entire project completion
- Initial shop drawing to be prepared and submitted based on the contract reference drawings and details given from the contractor to be able to emphasize the basis and the parameter of the contract agreement.
- Shop drawing is being executed by showing the necessary Key plans, detail plans, elevations, detailed sections and blow-up details for easy checking; 3D drawing can also be included if there was need for more visibility and clarity.
- Comments and approval by the consultant(s) / client from the first submittal of shop drawings will be regularly checked and compared with the contract agreements in case of any variations, availability of the specified materials, and even some changes affecting the manner in the execution of scope of works.
- Necessary ocular inspection/site verification and proper site coordination to the project engineer in-charge will take place immediately to ensure that the approved shop drawings and its will be applicable to the existing site condition and to the fabrication.
- Engineering works, Design, Calculation and Analyzing Using the STAAD Pro 2006 Static Calculation.
- As-Built Drawings, Warranty and Guarantee Certificate will also be provided to be used by the client as future references after the final acceptance of works.



## **MATERIAL SUBMITTALS**

- Prior to the final approval of the submitted shop drawings, necessary Material submittals are normally done in two copies, concerning the consultant and the client(s) to have a clear overview to be able to decide on the appropriate materials they want to use.
- Usual consideration in the preparation of submitting the required materials samples were as follows.
- Materials to be presented are properly labeled according to their material specifications, sizes, and color of paint in accordance with the submitted shop drawings and approved vendor.
- Proper paint application on the material submittals is thoroughly checked to ensure that the quality of paint to be used is suitable for the recommended materials to be used.
- Other related materials to be submitted are also included such as the method statements, paint system, catalogs and brochures for us to justify that the submitted materials, and shop drawings will be applicable to the existing condition of site, availability of limited resources and mostly the limitation on the execution of works in the fabrication.
- Required mock-up sample at the site will be followed the approval of the submitted shop drawings and all the material samples which was being submitted to the consultant/client(s).

## **DELIVERY OF MATERIALS**

- Prior to the scheduled deliveries of fabricated material at site, proper coordination with the project Engineer in-charge will immediately take place.
- Necessary Delivery notes or Acknowledgment receipts will be prepared, containing the following important data:

Delivery Date	: Location of the project site
Project Name	: Material Descriptions
Job Order Ref. No.	: Additional Remarks
Client's Name	: Authorized Signatory of delivery acknowledgment



# **OUR SERVICES**

**CONSTRUCTION**

**CAR PARKING ACCESSORIES**

**EXPANSION JOINTS SYSTEM**

**ARCHITECTURAL PRODUCTS**

**INTERIOR & EXTERIOR DECORATIVE MATERIALS**

**TILE TRIMS**

**STAIR NOSING, T-PROFILES, METAL STRIPS**

**ADHESIVE, SEALANT, GLUE & EPOXY**

**FIRE, SAFETY & ANTI-SLIP MATERIAL**

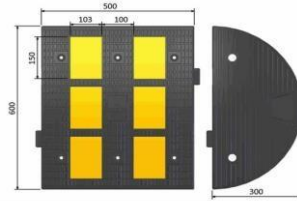
**FIRE / WATERBARRIERS**

**MAINTENANCE**

**GENERAL BUILDING MATERIALS**



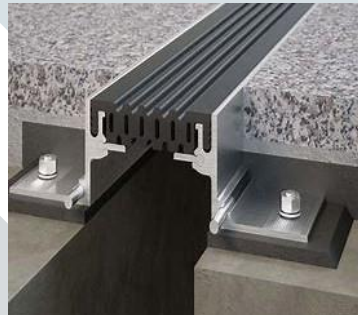
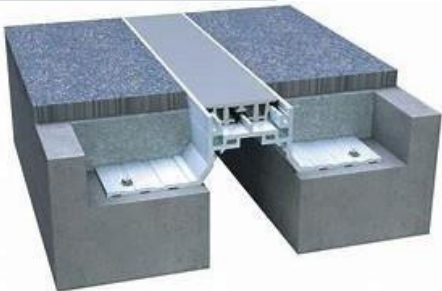
## CAR PARKING ACCESSORIES



When it comes to car parking accessories like wheel stoppers, corner guards, wall guards, and speed humps, the quality of the rubber used is crucial for ensuring their effectiveness, durability, and safety.

**Long-Term Investment:** While high-quality rubber accessories might have a higher upfront cost, their durability and low maintenance requirements make them a cost-effective choice in the long run. They often provide better value by reducing the need for frequent replacements.

## EXPANSION JOINTS



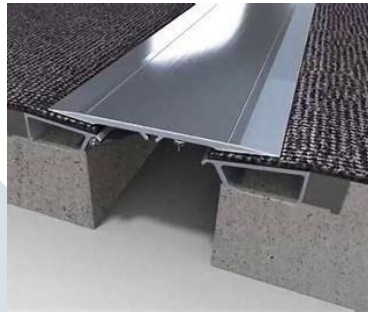
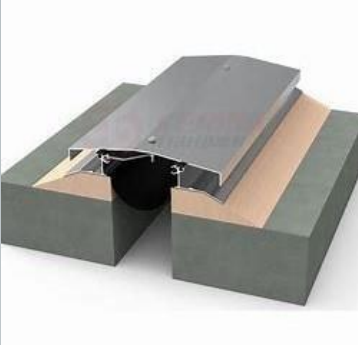
They are designed to safely absorb the heat-induced expansion and contraction of various construction materials, to absorb vibration, and to hold parts together, or to allow movement due to ground settlement or earthquakes. They are commonly found between sections of sidewalks, bridges, railway tracks, piping systems, ships, and other structures. They are also applied in floor, walls, and ceilings. Safety treads and stair nosing are heavy-duty integrated safety nosing's which are manufactured from reinforced aluminum extrusion.





# EXPANSION COVERS

Expansion covers are essential components designed to accommodate the thermal expansion and contraction of various structures. When it comes to choosing materials for these covers, stainless steel (SST) and aluminum stand out for their durability and versatility.



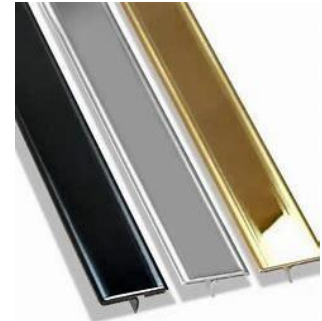
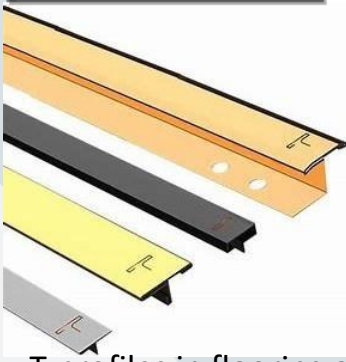
Stainless steel expansion covers are renowned for their strength and resistance to corrosion, making them ideal for harsh environments where durability is crucial. They provide robust protection and can withstand significant temperature fluctuations while maintaining structural integrity.



On the other hand, aluminum expansion covers offer a lighter alternative with excellent resistance to corrosion and good thermal conductivity. Their ease of installation and cost-effectiveness make them a popular choice for many applications where moderate strength and lightweight properties are desired.

# ARCHITECTURAL PRODUCTS:

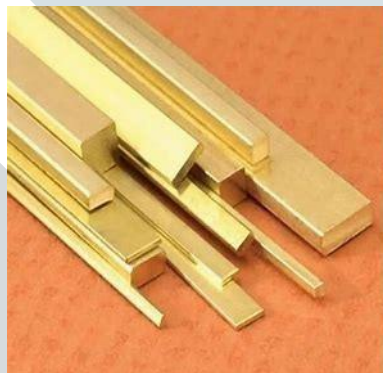
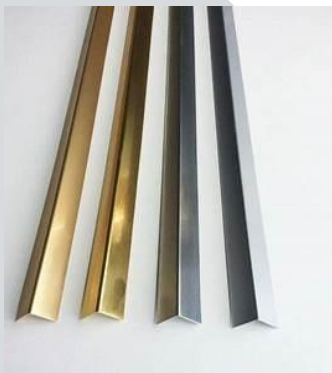
## T-PROFILE



T-profiles in flooring are specialized components used to create smooth transitions between different types of flooring or between different levels of the same flooring. They have a T-shaped cross-section, with the vertical stem providing a base that secures the profile to the subfloor and the horizontal bar covering the seam between the flooring types.

These profiles are commonly used in areas where different flooring materials meet, such as between carpet and tile or laminate and hardwood. They help to protect the edges of the flooring, prevent tripping hazards, and give a neat, finished look to the installation. T- profiles are available in various materials, such as metal, plastic, or wood, to match different flooring types and profiles.

## METAL STRIPS



Metal strips used in tile installations are edging or transition components that help to create clean, durable finishes at the edges of tiled areas. They are typically made from materials like aluminum or stainless steel and are used to protect tile edges from chipping, provide a smooth transition between different flooring types, and enhance the overall appearance of the installation.

These metal strips come in various profiles and finishes to match different tile styles and to suit various applications, such as corners, borders, or where tile meets other surfaces. They are essential for maintaining the integrity and aesthetics of tile work.

## **TILE MOVEMENT JOINTS**



Tile movement joints are crucial elements in tile installation that help manage the natural expansion and contraction of tile materials. They provide a flexible gap between tiles, allowing for movement due to temperature changes, structural shifts, or settling without causing cracks or damage to the tiles or underlying surface. Properly placed and maintained, these joints ensure a durable, long-lasting tile installation.

## **SAFETY TREADS & STAIR NOSING**



These are designed and manufactured top of the line, anti-slip stair treads. We are concerned about public safety. We are also dedicated to the quality and character of your building design. Our stair treads meet and exceed safety surface specifications, including ADA, OSHA, and are in compliance with the barrier-free code for the physically impaired. Safety treads and stair nosing are ideal for any indoor or outdoor application where stair tread protection and added safety are desired or required. Stair tread inserts are slip-resistant, durable

## **ANTI-SLIP MATERIALS**



Anti-slip materials are used to stabilize objects, improve grip and stop things slipping in numerous situations around the home, for example during rehabilitation and therapy sessions and in the industry, marine and music sectors. They have many applications and can be used in different situations e.g. in garages, cars, planes, marine applications etc. Anti-slip materials range from rubber anti-fatigue mats, anti-slip mats, anti-slip tape, rubber staircases, and many more.

# INTERIOR & EXTERIOR DECORATIVE MATERIALS

## PVC & ALUMINUM DECORATIVE AND BATH TRIMS



These are products made of PVC or aluminum used as decoration. They are used to cover edges, or as decorative materials to make bathrooms, kitchens and other rooms more elegant and attractive. They are available in different designs, sizes and different colors, and are manufactured in high-grade materials.

## TILE TRIMS



Tile Trim comes in PVC, aluminum and stainless steel in different sizes. It is used to protect tile edges from chipping and avoids tile chamfering in vertical trimming. It prevents the exposure of sharp edges and dust accumulation in horizontal trimming.



# ADHESIVE, SEALANT, GLUE & EPOXY

## ADHESIVES & SEALANTS



Silicone sealant is a powerful, flexible product that can be used in many different applications. It can withstand high temperatures, making it ideal for different applications. It is fast-curing, and a ready-to-use excellent adhesive. It comes in different colors; white, grey, beige, clear, black, and brown. It is used around windows, doors, frames, base boards, siding and in any joint or gap where a weather-tight seal is needed. It is made in the USA, with guarantee quality.

## FIRE SEALANTS:



These are used to seal openings and joints in a fire resistance rated structures including walls, and floors. Intumescent fire sealants include adhesives, fire cements, and sealants that provide fire retardant and or heat resistant properties. Fire sealants provide a tight and dependable seal against fire, smoke, toxic fumes and moisture. Ideal for new construction or retrofitting in a wide variety of applications such as metal, plastic, insulated and glass pipes, construction gaps, dynamic joints, HVAC ductwork, and insulated cables.

# GEO-GRID, GEOMEMBRANE, GEOTEXTILE

Double-direction geogrid is made of high-molecular polymer manufactured by extrusion, forming and punching before longitudinal and lateral stretching. This material has considerable tensile strength in longitudinal and lateral directions. This chain structure can effectively bear and diffuse forces on soil, and is suitable for large area, permanently load-bearing foundations as a reinforcement.

## TPO MEMBRANE



TPO membranes are single-ply roof membranes constructed from ethylene propylene rubber. They are designed to combine the durability of EPDM rubber with the proven performance of hot-air weldable seams. They have been tested as having excellent resistance to ozone, are algae-resistant environmentally- friendly, and safe to install. The material's manufacturers are so confident of their properly-welded seams that the material is sometimes advertised as a monolithic (seamless) roof. Seam strengths are reportedly 3 to 4 times greater than those of EPDM's adhesive and tape seams.

## GEOTEXTILE



Geotextiles are permeable fabrics which, when used in association with soil, have the ability to separate, filter, reinforce, protect, or drain. Typically made from polypropylene or polyester, geotextile fabrics come in three basic forms: woven (looks like mailbag sacking), needle punched (looks like felt), or heat bonded (looks like ironed felt). Geotextile composites have been introduced, and products such as geogrids and meshes have been developed.

# FIRE/WATER BARRIERS



Fire/water barriers are essential components in building design that help manage and contain the spread of fire and water. Fire barriers are constructed to resist the passage of fire and smoke between different parts of a building. They are usually made from fire-resistant materials and are designed to maintain their integrity during a fire, helping to prevent flames and heat from spreading, which can protect occupants and property.

Water barriers, on the other hand, are designed to prevent or control the flow of water. They are commonly used in areas prone to flooding or water damage to redirect or contain water and protect structures from water-related issues.

Both types of barriers play crucial roles in enhancing the safety and durability of buildings, ensuring that they can withstand emergencies and remain functional over time.

## PVC WATERSTOP



It is a product designed for use in concrete construction containing joints, one side of which is subject to hydro static pressure. It is used as a barrier within the joint to prevent the passage of liquid through or across the joint. It is embedded in the concrete on both sides of the joint and spans the joint. It is designed to accommodate lateral and transverse movement. It is made of PVC which comes into different sizes which will be based on the requirement.



# MAINTENANCE

## LADDERS



We provided affordable and durable climbing solutions. Werner ladders range from single, A-type, extensions, with platform, with wheels, attic type, or scaffold types of ladders. They are in different sizes, widths, lengths, load capacities, and colors. Werner Ladders are specially made of aluminum, fiberglass, and wood. These ladders are certified by the American National Standards Institute (ANSI), and Occupational Safety Health Administration Code (OSHA).

## DIY AND INDUSTRIAL QUALITY LADDERS



Other types of ladders from Italy, Germany and Singapore are also kept and maintained by us. They serve our customers' interests and provide more options to our clients, customers, or end users. The tower is made of aluminum, burglars, and wood in a single type, A type, extension, dual purpose, and multi- purpose ladders. It comes with different load capacity, and in different steps to match height requirements. walls, floors, ceilings, and attic sections of buildings. They provide an easy way of accessing such parts of buildings.

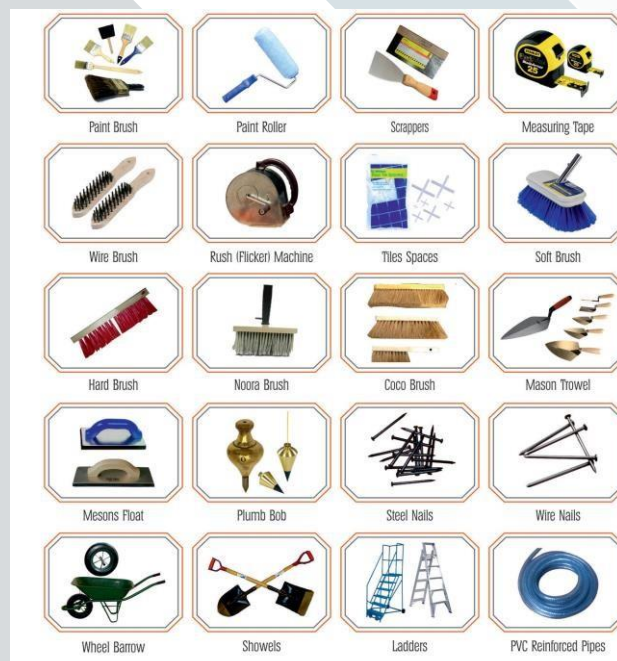




# GENERAL BUILDING MATERIALS



General building materials are a variety of selected construction and building materials which are normally used by different construction and engineering companies in different applications. They include natural and artificial materials and products used for the construction and repair of buildings and structures. There are many different purposes, and the operating conditions of buildings and structures account for the variety of demands placed on building materials and for the great diversity of available materials. These range from caulking silicone guns, tools for home use, spray paint, joint compounds, chalk lines and reels, tile cutters, gasket makers, and many more.



# **OUR PROJECTS**

- **A-033 PROJECT- B+G+5- RESIDENTIAL BUILDING**  
Company: **AHMED BIN HAMAD AL THANI TRADING & CONTRACTING COMPANY(ABH)**  
Address: **AL WAAB**
  
- **KHALIFA AVENUE- COMMERCIAL PLAZA**  
Address: **MADINATH KHALIFA**  
Company: **WESTFIELD ENGINEERING & CONSTRUCTIONS CO.**
  
- **MARKIYAH INTERNATIONAL SCHOOL**  
Address: **MARKIYAH**  
Company: **WESTFIELD ENGINEERING & CONSTRUCTIONS CO.**
  
- **B+G+3 - RESIDENTIAL BUILDING**  
Address: **AL SADD**  
Company: **ADDIYAR ENGINEERING FOR CONSTRUCTIONS & CONTRACTING CO.**
  
- **PRIVATE PALACE**  
Address: **MARKIYAH**  
Company: **WESTFIELD ENGINEERING & CONSTRUCTIONS CO.**



# **SPEED & TRACK**

**TRADING & CONTRACTING**

**SINCE 2015**



**ADDRESS: RETAJ BUILDING, 2ND  
FLOOR, OFFICENO. 253, ABU HAMOUR,  
DOHA, QATAR  
P.O BOX: 40590  
PHONE:+974 71733017,+974 6009 3866  
FAX: 44371722  
EMAIL: [INFO@SPEEDANDTRACK.COM.QA](mailto:INFO@SPEEDANDTRACK.COM.QA)  
WEBSITE: [WWW.SPEEDANDTRACK.COM.QA](http://WWW.SPEEDANDTRACK.COM.QA)**